



The End



The image features the text "The End" in a cursive font, centered within a light blue oval. The text is rendered in a purple-to-pink gradient. Above and below the oval are decorative flourishes consisting of stylized, colorful scrollwork in shades of purple, blue, and pink.

What do you want them
to remember?



KISS



Keep it Simple Sweetie !

- What can they relate to?
- Where are they starting at?
- This is not the time to show your:
 - In depth knowledge
 - Large vocabulary
 - Spread sheet skills

Don't be this guy!



It is the time to be
yourself



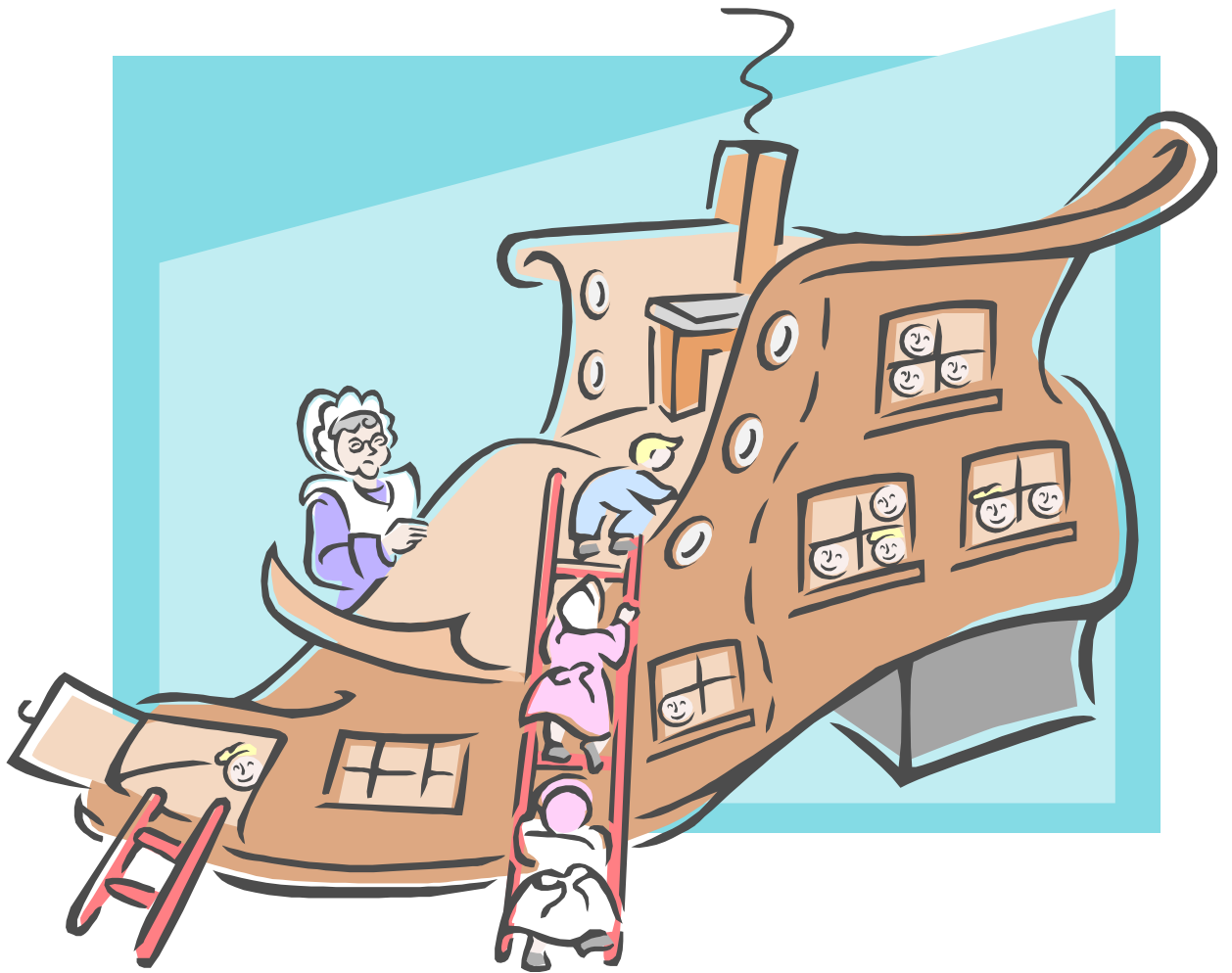
Okay

Some of us may need
to tone it down some!

Tell a Story!



Millage Campaign



The Funding Story



Lot's of Movement but Not
that much more money!



Start with the Big Picture



Always start with the broad
concept and work your
way down

Examples

The Budget



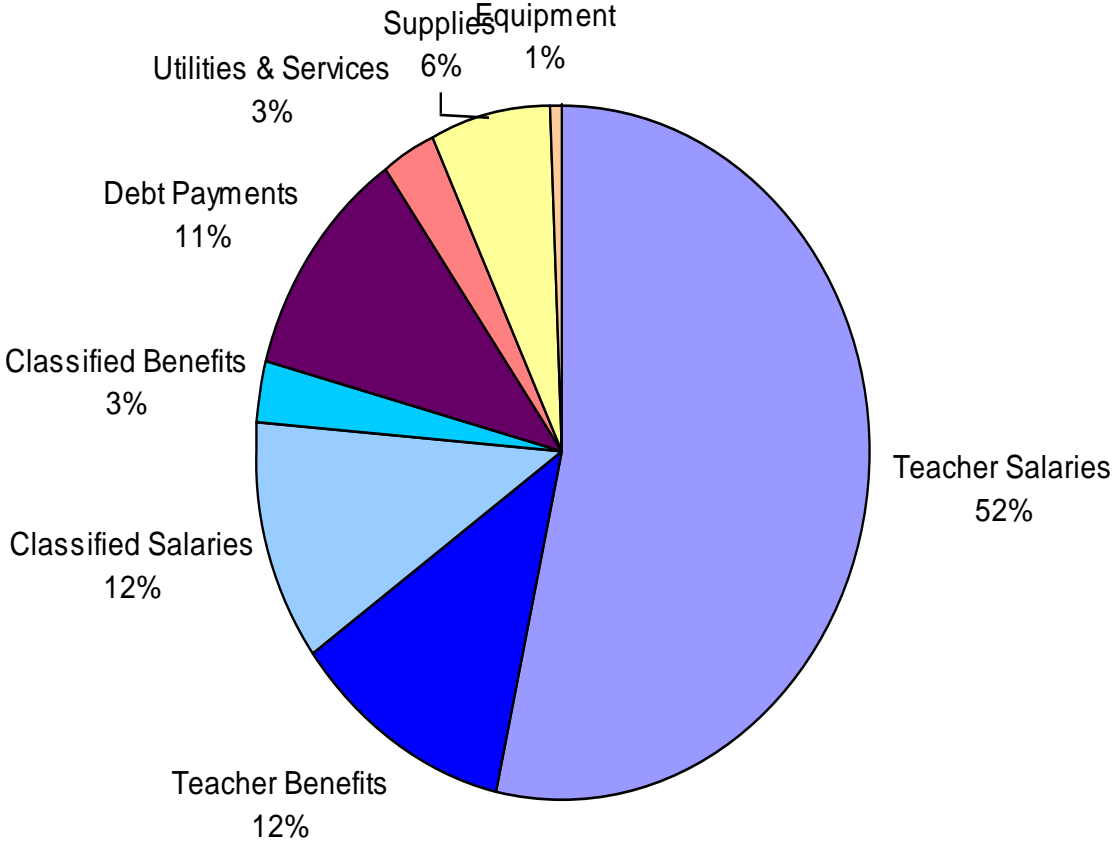
Where does THE Money GO?



Educating children is a labor-intensive process. For that reason, the largest share of any school district's budget goes to pay for employees' wages and benefits. After salaries, the remaining budget goes to pay for supplies, equipment, utilities and the repayment of debt.

79%	Salaries & Benefits
11%	Debt
6%	Supplies
3%	Utilities
1%	Equipment
100%	

2008-2009 Expenditures



Example of Property Taxes

House appraises for \$150,000	×	Property Assessment Ratio 0.20	=	Assessed Value \$ 30,000
Assessed Value \$30,000	×	Millage Rate .0384	=	Tax Revenue For Rogers Schools \$ 1,152

**Mills to the school district.
Mills are in thousandths.**

The property assessment is 20 percent applied to the “true market value” of real property and to the usual selling price of personal property. The example above explains how to calculate the amount that Rogers Public Schools receives from your property taxes. The assessed value is multiplied by the millage rate which is 38.4 for Rogers schools. One mill is equal is one thousandth of a dollar.



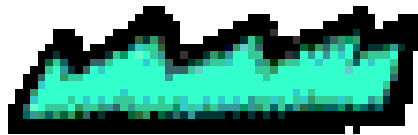
Restricted Funds



State Restricted

- NSLA
- Professional Development
- ESL
- ALE
- Federal Funds
- Building
- Food Service
- Technology
- Dedicated Mill

Supplanting



Enhance the
garden !

Coding is a language
(Maybe a foreign one)
2000 1120 044 000 00



Bond issues = Mortgage

Debt Service Payments = House
payments

Second Lien Bonds = Home equity loan

Refunding Bond Issue = Refinancing



Equalized Salary Payments



- Most employees get 1st check in Sept. and 3 checks in June.
- All contracted employees have equalized payments.

On average



A Citizen's guide to the

Rogers School District

2009-2010 Budget



Other tips!

Including Stealing and Bribery

- Look on- line
- Steal Ideas
- Practice of someone who has no idea of what your explaining
- Practice on an expert
- Practice on your dog
- Bribe the audience
- Use animated clip art
- If you run short ask for questions

**ANY
QUESTIONS ?**



Presentation are on
AASBO's web site
feel free to use
them!

Kathy Hanlon

khanlon@rps.k12.ar.us

Rogers Schools

479.636.3910